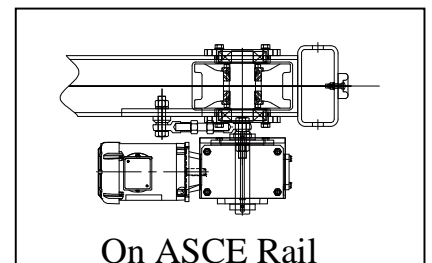
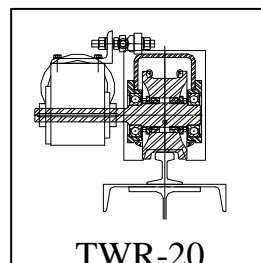
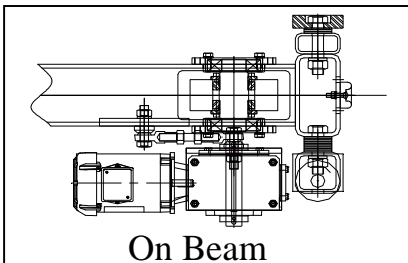
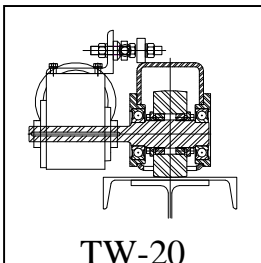
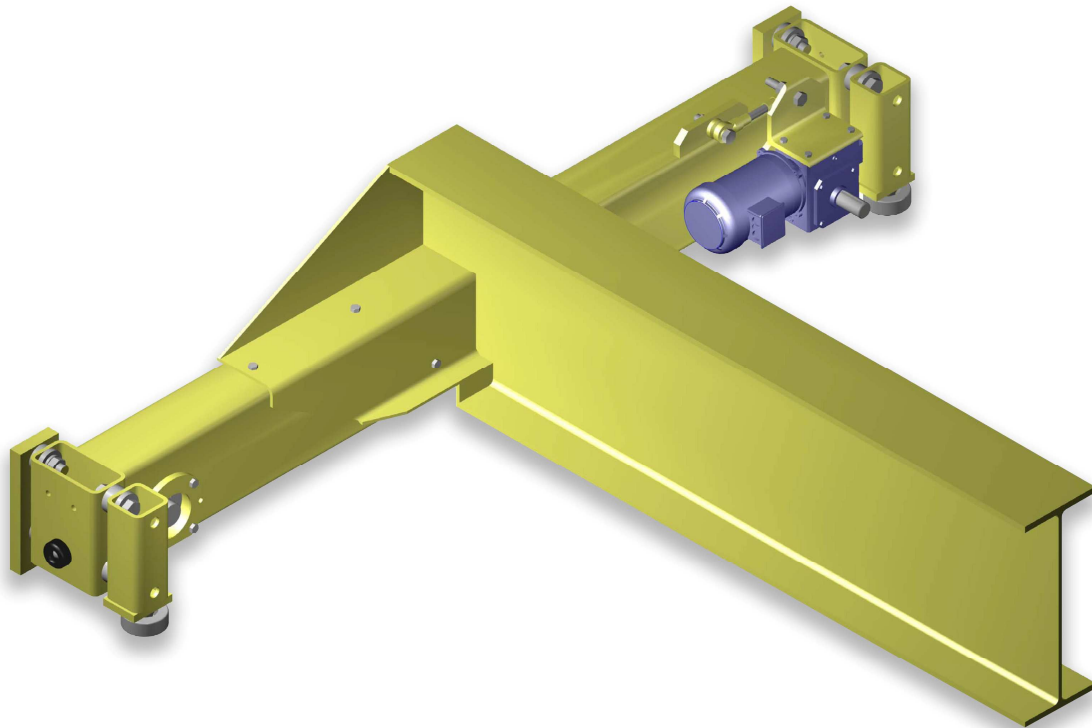


TW-20 and TWR-20 Cranes

1/17/11

For Pre-Engineered Free Standing Crane Systems to 10 Ton Capacity



CraneVeyor offers TW/R-20 overhead cranes to provide larger capacities and wider spans for TranSystem Free Standing Work Area Crane systems. The Pre-Engineered systems have been expanded from 5 to 10 ton capacity and to 55' crane spans with good economy and delivery. The TW/R-20 cranes are part of our CV TransTop Self-Supporting crane system.

The TW-20 is our flangeless wheel design which allows the crane to operate on top of the runway beam without additional costs of ASCE rail and hardware.

The TWR-20 is our flanged wheel design for the crane to operate on ASCE rail when applicable. The TWR cranes are available to operate on other existing or new top riding runway rail systems.

CraneVeyor Above the rest since 1946



Website: www.cranevevor.com
1524 No. Potrero Ave., P.O. Box 3727, South El Monte, CA 91733
(626) 442-1524 • Email: cranehoistsales@cranevevor.com • Fax: (626) 442-7308
Outside CA (800) 423-4180